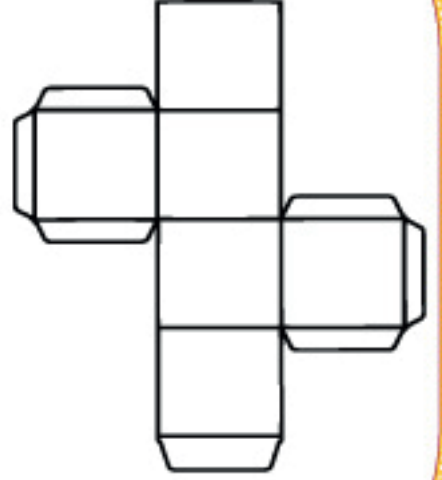


Tüm yüzeyleri karedir.  
6 tane yüzeyi vardır.  
8 tane köşesi vardır.  
12 tane ayrıtı vardır.



Aşağıdaki yapıların kaç eş küpten oluştuğunu örnekteki gibi yazalım.

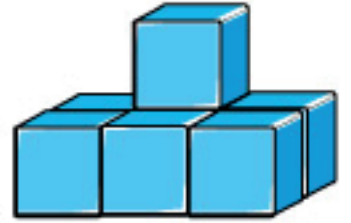


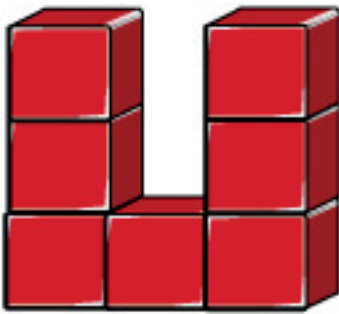
10 eş küpten oluşur

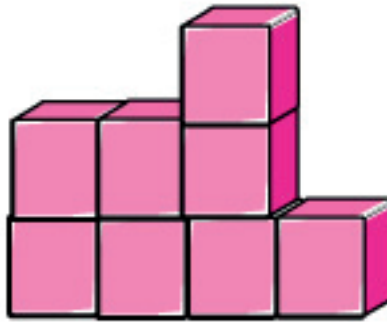


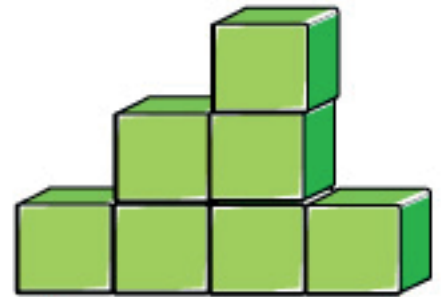












Baştaki küpün doğru olan açılımını işaretleyelim.

Row 1: A red cube with a yellow star on the top face, a yellow square on the front face, and a yellow circle on the right face. Four possible nets are shown to its right, each with a circle below it for marking.

Row 2: A pink cube with a yellow heart on the front face, a yellow square on the top face, and a yellow star on the right face. Four possible nets are shown to its right, each with a circle below it for marking.

Row 3: A blue cube with a yellow star on the front face, a yellow triangle on the top face, and a yellow circle on the right face. Four possible nets are shown to its right, each with a circle below it for marking.

Row 4: An orange cube with a yellow heart on the top face, a yellow circle on the front face, and a yellow square on the right face. Four possible nets are shown to its right, each with a circle below it for marking.

Row 5: A green cube with a yellow triangle on the front face, a yellow heart on the top face, and a yellow circle on the right face. Four possible nets are shown to its right, each with a circle below it for marking.

AÇILIMI VERİLEN  
KÜPÜ OLUŞTURMA

